



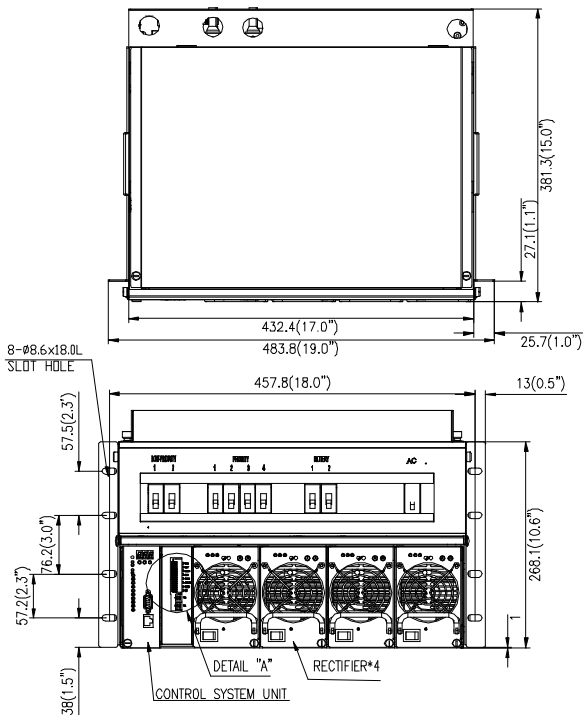
MCS 1800 Series Power Shelf

=PDU On Top Series=



- U **System capacity: 24V/50A~200A**
- U **PDU and Web sever function embedded**
- U **TUV/CE approved**

Model No	ES24/200-JBA01
AC Input	Single Phase/Three Phases
Capacity	200A Maximum
DC Output	20~29Vdc
Rectifier	24V/50A Rectifier
Comm. Interface	RS 232 RJ 45 (WEB)
AC Switch	50A Breaker *1
Battery Disconnect	100A Breaker *2
DC Distribution	63A *2, 25A *2, 16A *2
GMT Fuse	No
LVDS	100A*1 on Battery Side
Output Relay	8
EMI	CISPR 22 CLASS A
Dimension (W x D x H)	19" x 15" x 12.1" 482.6mm x 381mm x 308.1mm
Operating Temperature	-10~50°C
Safety	TUV/CE



System Dimensions

