

Advanced Gel Technology



RELIABLE, ENVIRONMENTALLY FRIENDLY and COST EFFECTIVE

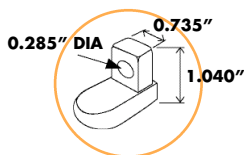
The POWER SOLAR series is a line of advanced GEL sealed batteries that will provide to the user a long life product when used in cycling applications. This is made possible because Power Battery uses the Advanced GEL (patent pending) design which combines the best features of AGM and GEL construction into one battery line. The result is a battery which has a wide range of capacities, will endure the rigors of high temperatures better than traditional GEL or AGM batteries. The PSG series is highly resistant to damage from vibration and rough handling, and will provide long and reliable life in a renewable energy cycling environment. The chart below provides data concerning cycle life at various depths of discharge.

Battery Model	Volts	Ampere Hours			Dimensions (inches/mm)				Weight lbs/kg	Terminal Type
		C/8	C/20	C/100	Length	Width	Height (case)	Top of Terminal		
PSG-1240	12	28	33	36	7.71/196	5.18/132	6.18/157	7.19/183	26.8/12.2	"L" Type
PSG-1260	12	46	55	58	9.00/229	5.43/138	8.31/211	9.50/241	38.9/17.6	1/4" Studs
PSG-1285	12	66	76	88	10.2/259	6.57/169	8.11/206	9.30/236	60.7/27.5	1/4" Studs
PSG-12105	12	78	91	105	12.0/305	6.57/169	8.20/208	9.39/239	72.0/32.7	1/4" Studs
PSG-12120	12	91	110	122	13.5/343	6.76/172	8.38/213	9.13/232	81.8/37.2	1/4" Studs
PSG-12165	12	128	142	165	13.5/343	6.76/172	10.7/272	10.9/277	101/45.8	1/4" C.I.
PSG-12255	12	200	220	255	21.0/533	8.50/216	8.88/226	10.0/254	178/80.8	SAE
PSG-6255	6	193	220	255	10.7/272	7.38/187	10.5/267	10.9/277	78/35.4	5/16" C.I.

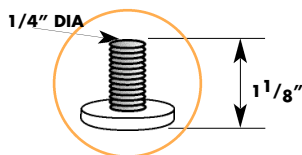
THE POWER SOLAR GEL ADVANTAGE

- Shock absorbent polypropylene plastic. Resistant to extreme temperatures and vibration.
- Heat sealed jar & cover assembly. Eliminates the risk of both acid and electrical leaks.
- Maintenance free construction design.
- Advanced GEL design. Provides deep cycle capability throughout the life of the battery.
- Oversized internal components. Insures minimal voltage drop and more power availability.

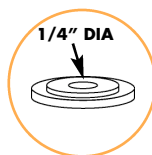
- Industrial grade battery plates. Out lasts wet lead acid batteries of similar caliber.
- Every battery model is equipped with lifting handles excluding the 6 volt model.
- Each cell comes with a safety release mechanism to prevent venting under normal operating conditions.
- Multiple operating positions (except upside down).
- 100% recyclable materials.



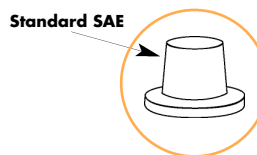
"L" Type



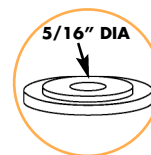
1/4" Studs



1/4" Copper Insert



SAE



5/16" Copper Insert

Cycle Life VS. Depth of Discharge

15% DOD	2200 cycles
25% DOD	1700 cycles
50% DOD	900 cycles
80% DOD	600 cycles

Options

- Battery cables and harnesses.
- Other models available.
- Battery boxes.

No transport restrictions

- Surface transport. Classified as non-hazardous material as relates to DOT-CFR Title 49 parts 171-189.
- Maritime transport. Classified as non-hazardous material as per IMDG amendment 27.
- Air transport. Complies with IATA / ICAO, special provision A67.



1539-1-0312

U.S.A.
Power Battery Company, Inc.
25 McLean Blvd.
Paterson, N.J. 07514-1507
Phone: (973) 523-8630
Fax: (973) 523-3023
E-mail: sales@powbat.com
Website: www.powerbattery.com

CANADA
Power Battery (Iberville) Ltd.
770 Thomas Ave.
Iberville, Québec, J2X 5E7
Phone: (450) 346-3273
Fax: (450) 346-8003
E-mail: powerbat@sympatico.ca
Website: www.powerbattery.com

UK
Power Batteries Ltd.
Premier Way, Abbey Park Industrial Estate
Romsey, Hampshire, SO51 9AQ
Phone: +44 (0)1794 835900
Fax: +44 (0)1794 835910
E-mail: sales@powbat.co.uk
Website: www.powbat.co.uk

ITALY
Power Battery Srl
Via Locatelli 105
20046 Biassono MI - ITALY
Phone: +39 039 2324571
Fax: +39 039 2499200
E-mail: calberti@powbat.it
Website: www.powbat.it